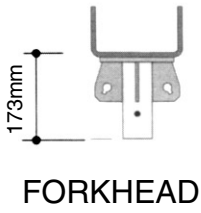


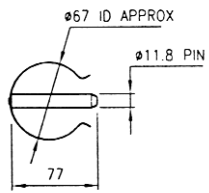


RAPIDSHOR

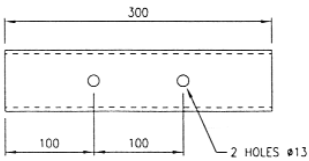
COMPONENTS



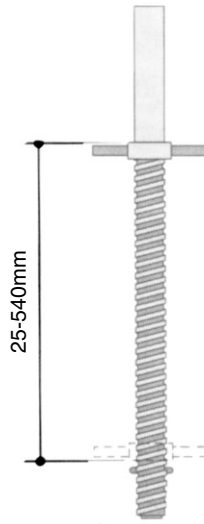
FORKHEAD



OMEGA CLIP



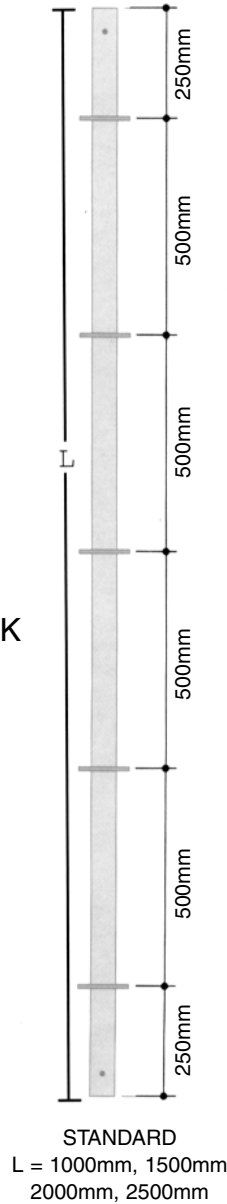
JOINT SLEEVE



ADJUSTABLE JACK



BASE



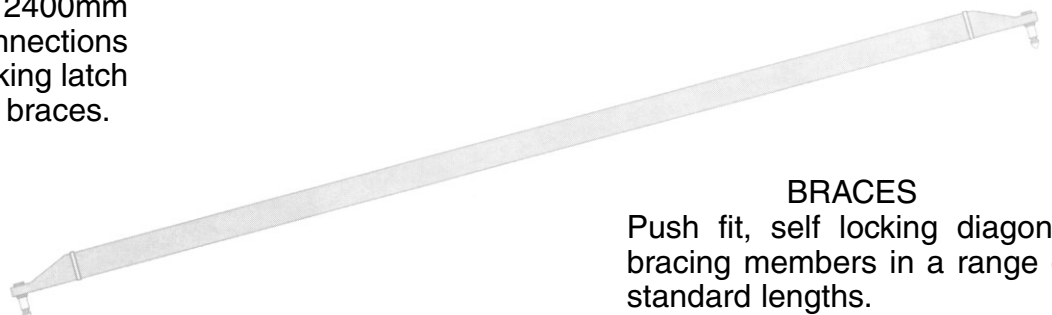
STANDARD
L = 1000mm, 1500mm
2000mm, 2500mm

DESCRIPTION	WEIGHT (kg)
Rapidshor 1000mm Standard	5.3
Rapidshor 1500mm Standard	7.9
Rapidshor 2000mm Standard	10.5
Rapidshor 2500mm Standard	13.2
Rapidshor 1200mm Ledger	5.3
Rapidshor 1500mm Ledger	6.3
Rapidshor 1800mm Ledger	7.4
Rapidshor 2400mm Ledger	9.6
Rapidshor 1000 x 1200mm Brace	4.6
Rapidshor 1000 x 1500mm Brace	5.3
Rapidshor 1000 x 1800mm Brace	7.2
Rapidshor 1000 x 2400mm Brace	10.1
Rapidshor 1500 x 1200mm Brace	5.7
Rapidshor 1500 x 1500mm Brace	7.5
Rapidshor 1500 x 1800mm Brace	8.3
Rapidshor 1500 x 2400mm Brace	13.1
Rapidshor 2000 x 1200mm Brace	9.4
Rapidshor 2000 x 1500mm Brace	10.8
Rapidshor 2000 x 1800mm Brace	11.6
Rapidshor 2000 x 2400mm Brace	14.5
Rapidshor Short Adj Brace	6.4
Rapidshor Long Adj Brace	9.2
Rapidshor Base	3.2
Rapidshor Forkhead	5.8
Rapidshor Adjustable Jack	6.3
Rapidshor Joint Sleeve	1.5
Rapidshor Omega Clip	0.1



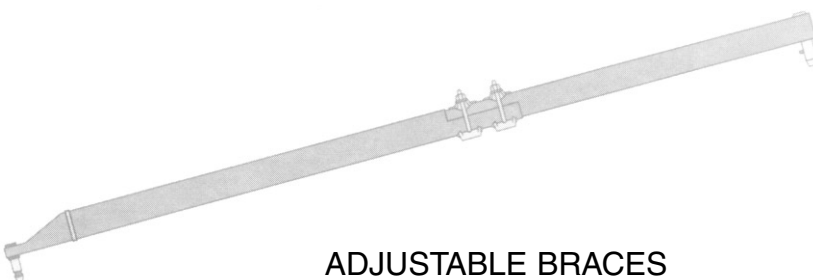
LEDGER

1200, 1500, 1800 and 2400mm lengths with wedge connections to standards and self locking latch mechanisms to diagonal braces.



BRACES

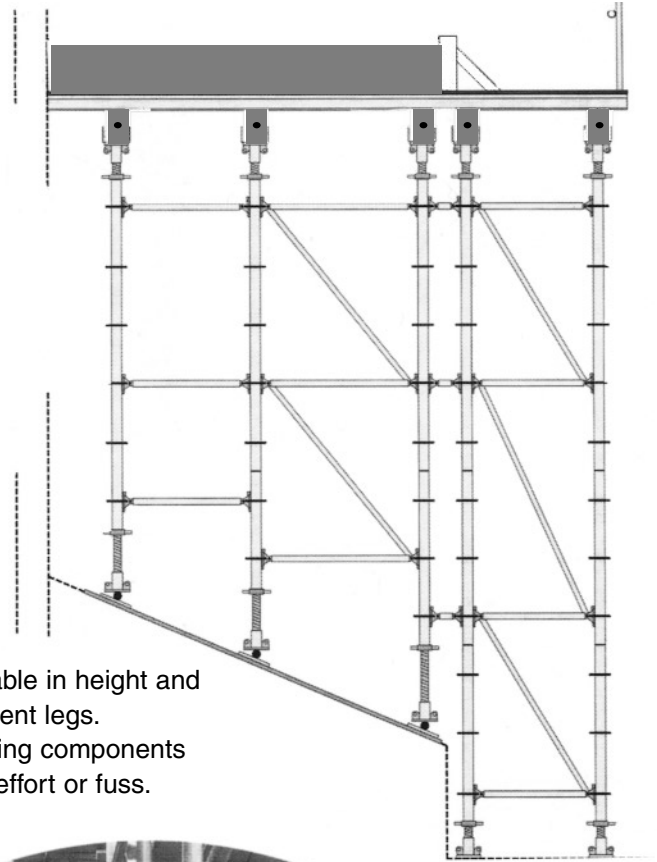
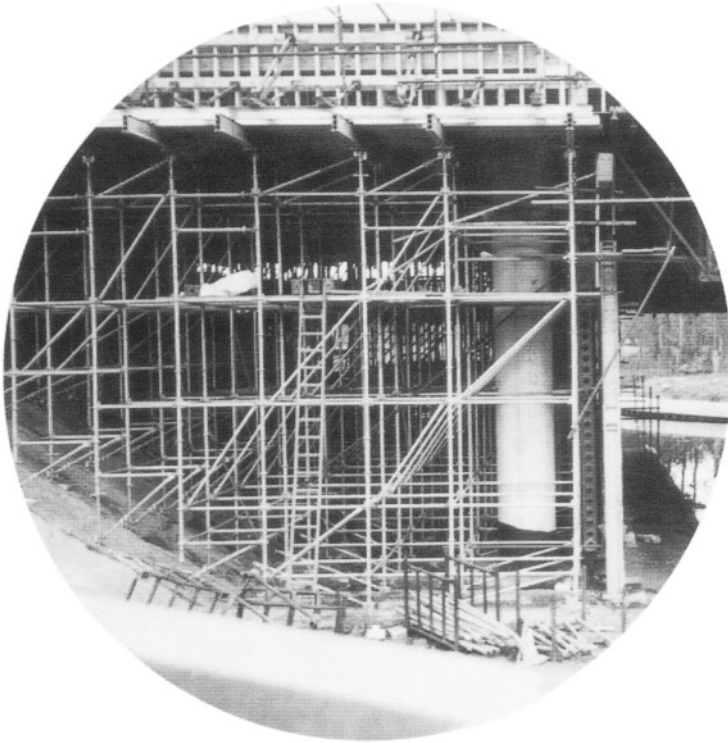
Push fit, self locking diagonal bracing members in a range of standard lengths.



ADJUSTABLE BRACES
1085-1770mm Short, 1530-2630mm Long

FEATURES AND BENEFITS

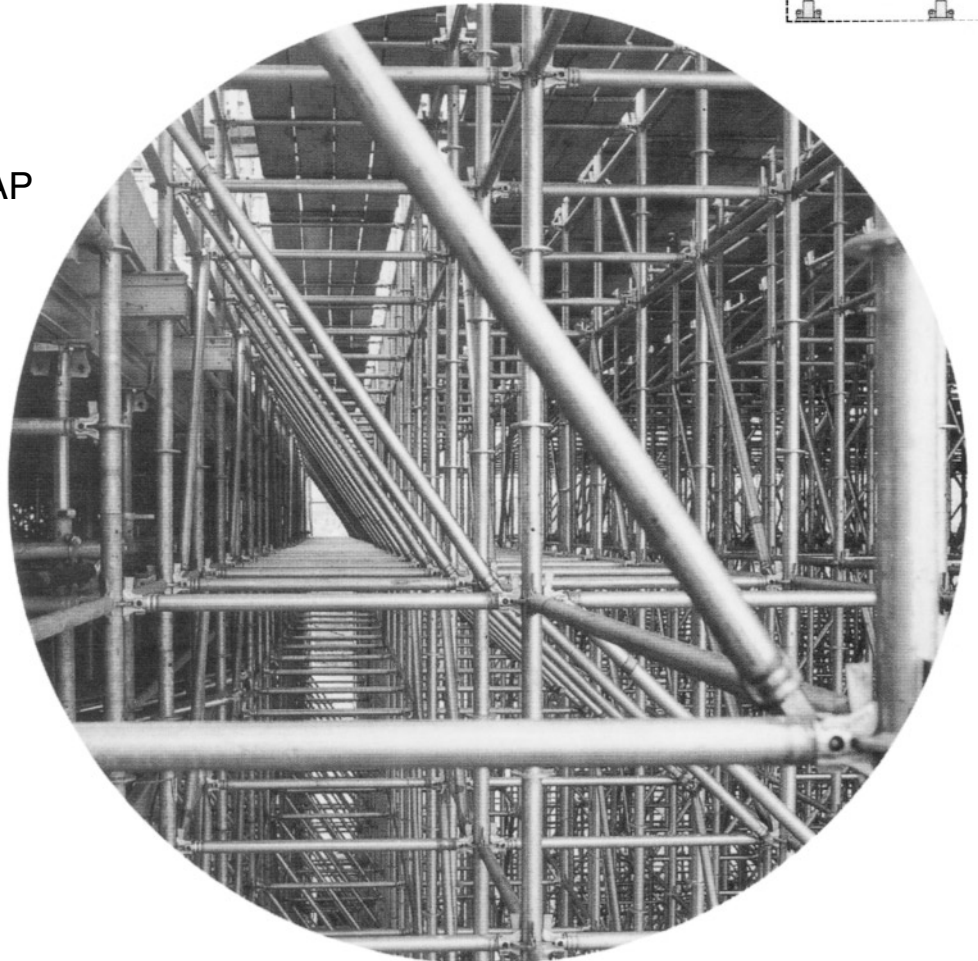
ACCOMMODATES SLOPING GROUND



Rapidshor standards in conjunction with base jacks are fully adjustable in height and easily accommodate any change in ground level between two adjacent legs. The long jack extensions, tilting base units and adjustable jack bracing components ensure that sloping embankments are tackled with the minimum of effort or fuss.

MODULAR BAYS AND SNAP ON BRACING

Modular bay sizes with wedge fixings for the horizontal members and snap-on diagonal braces are very fast to fix on site and have the added benefit of making the complete support structure regular and easy to check.



TECHNICAL DATA

JACKS

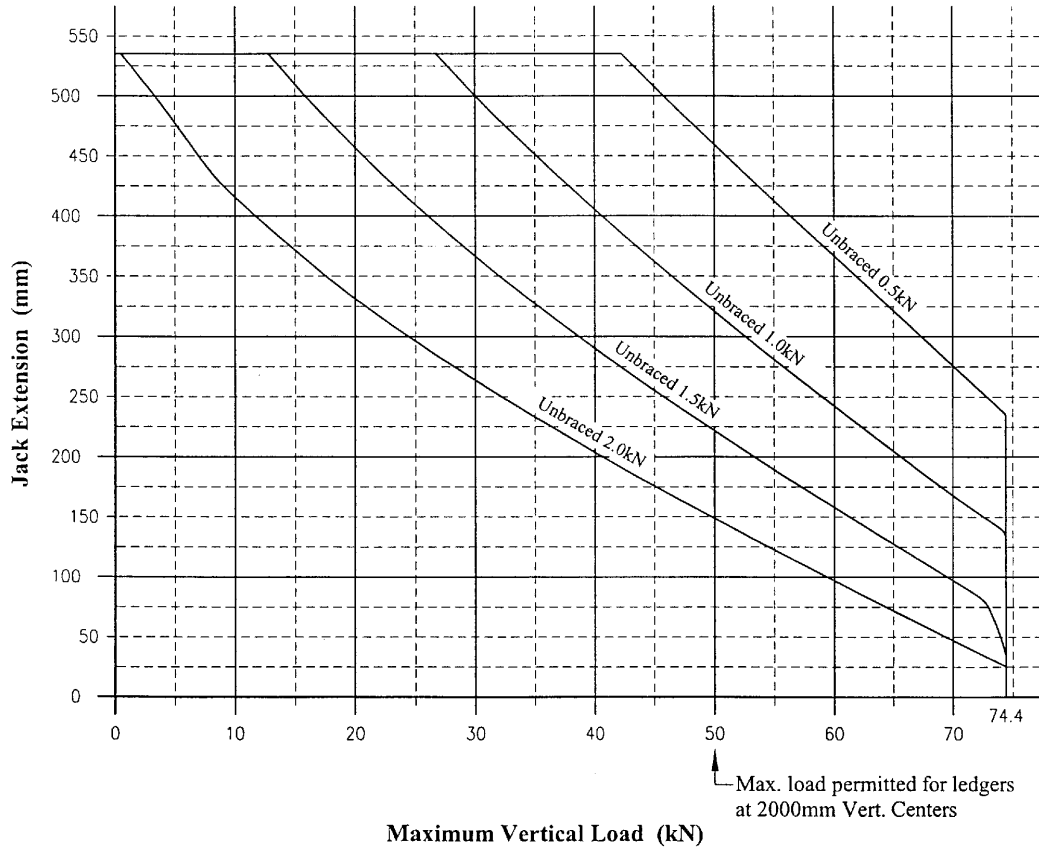
MAX. ALLOWABLE LOAD

RESTRAINED OR BRACED CONDITION

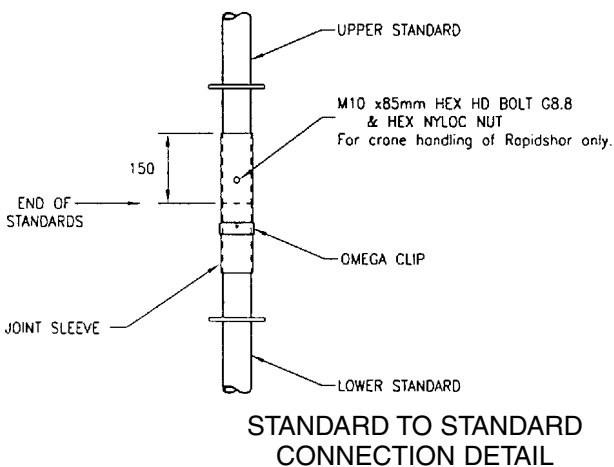
This condition assumes that the soffit is restrained by the adjacent structure, or the row of jacks is adequately braced.

UNBRACED CONDITION

This condition applies when there is no reliable restraint for the jacks and which are subjected to a side load due to wind and other external loads.



STANDARDS

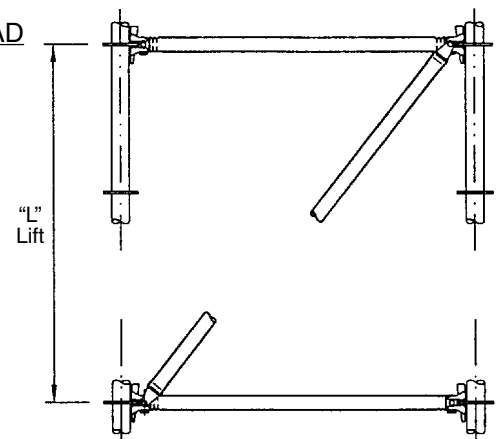


MAX. ALLOWABLE LOAD

For L = 1500mm
Max. Allowable Load = 74.4kN

For L = 2000mm
Max. Allowable Load = 50.0kN

Acting in tension
(for crane handling only)
= 10.0kN



BRACES

- (a) Max.SWL for all adjustable braces in tension only = 6.2kN
 (b) Max.SWL for all fixed length braces in tension only = 20.0 kN
 Max.SWL for all fixed length braces in compression - see table 1.

TABLE 1

LEDGER SPACING \ BAY SIZE	1200mm	1500mm	1800mm	2400mm
1000mm	13.0 kN	10.5 kN	1.8 kN	6.0 kN
1500mm	9.0 kN	10.5 kN	7.0 kN	8.0 kN
2000mm	7.0 kN	6.0 kN	9.0 kN	7.0 kN